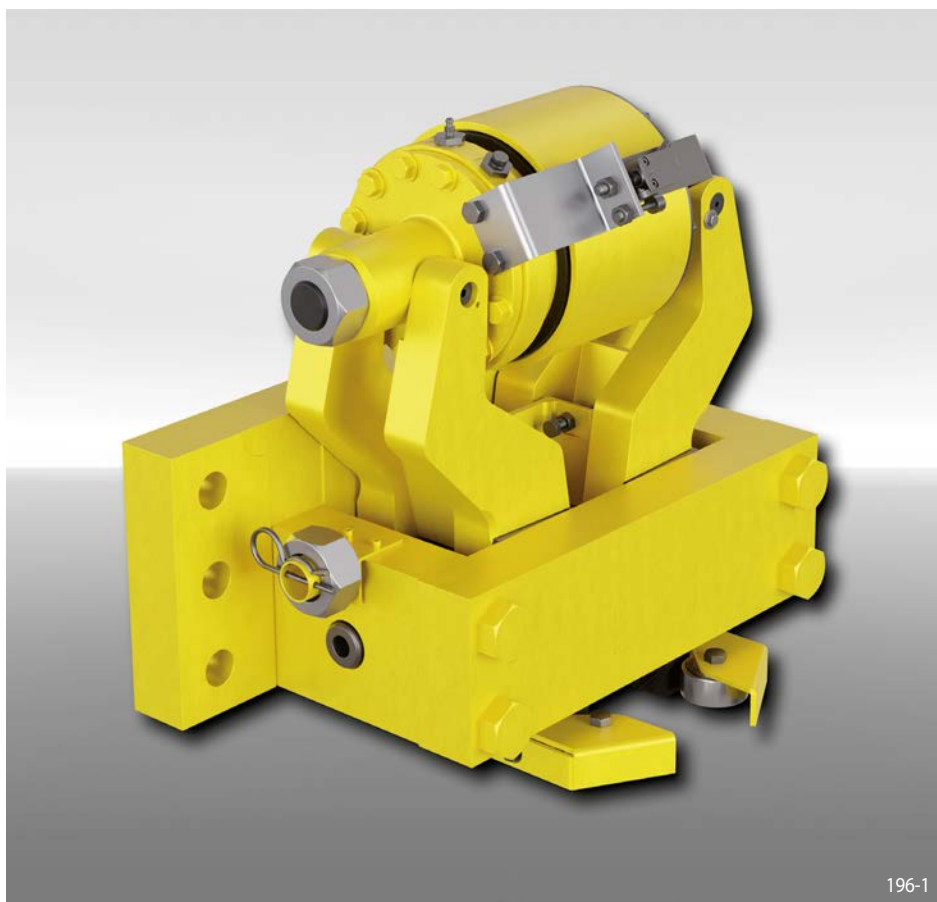


Rail Clamp DR 088 FHK

spring activated – hydraulically released



196-1

Technical Data

Braking force	500 kN
Nominal pad gap (total)	2 mm
Oil pressure	min. 110 bar max. 130 bar
Oil volume	max. 220 cm ³
Weight	290 kg

Features

Features	Code
Clamp	D
Rail	R
Frame size 088	088
Spring activated	F
Hydraulically released	H
No adjustment to accommodate friction block wear	K
Max. braking force 500 kN	500
Thruster mounted in central position	M
Clamping jaws are available for rail profiles A55, A65, A75, A100, A120 or 60E1	A55 A65 A75 A100 A120 60E1

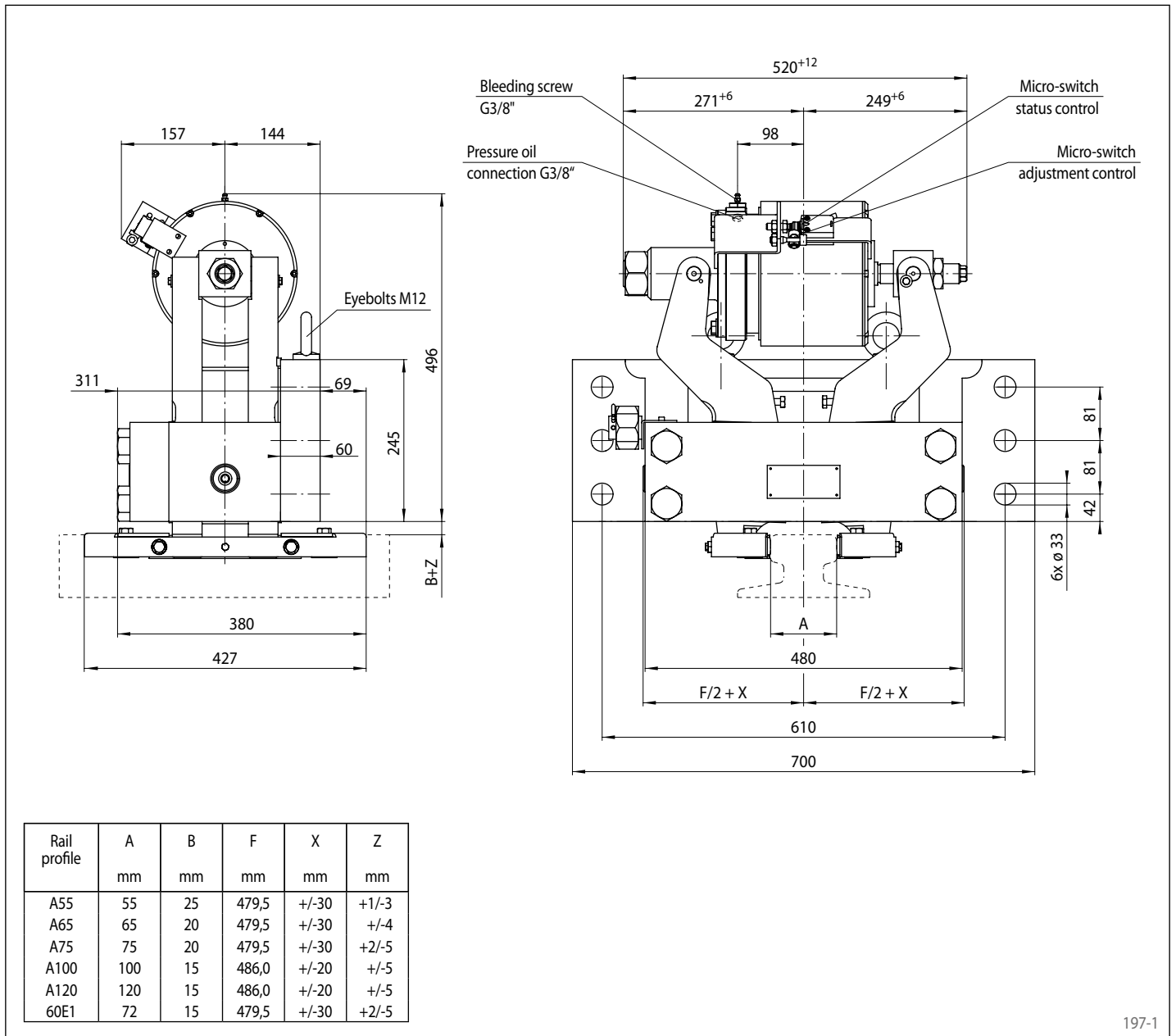
Example for ordering

Rail Clamp DR 088 FHK, max. braking force 500 kN, thruster mounted in central position and rail profile A55:

DR 088 FHK-500 M-A55

Rail Clamp DR 088 FHK

spring activated – hydraulically released



197-1

Working conditions

- Ambient temperature: -20 °C / +40 °C
- Air humidity: <90%

Monitoring switch

- 240 VAC 1.5 A; 250 VDC 0.1 A
- Cable 5 x 0.75 mm², length 2 m, outer diameter 7.5 mm
- Protection type IP67

Options

- Protection cover
- Integrated Hydraulic Power Unit
- Offshore certifications
- Seawater execution
- Flat pads for dynamic braking

Notes

- Eyebolts included
- Fastening:
6 screws M30, class 10.9 with tightening torque 1 515 Nm ± 5% μ 0.10 (not supplied)