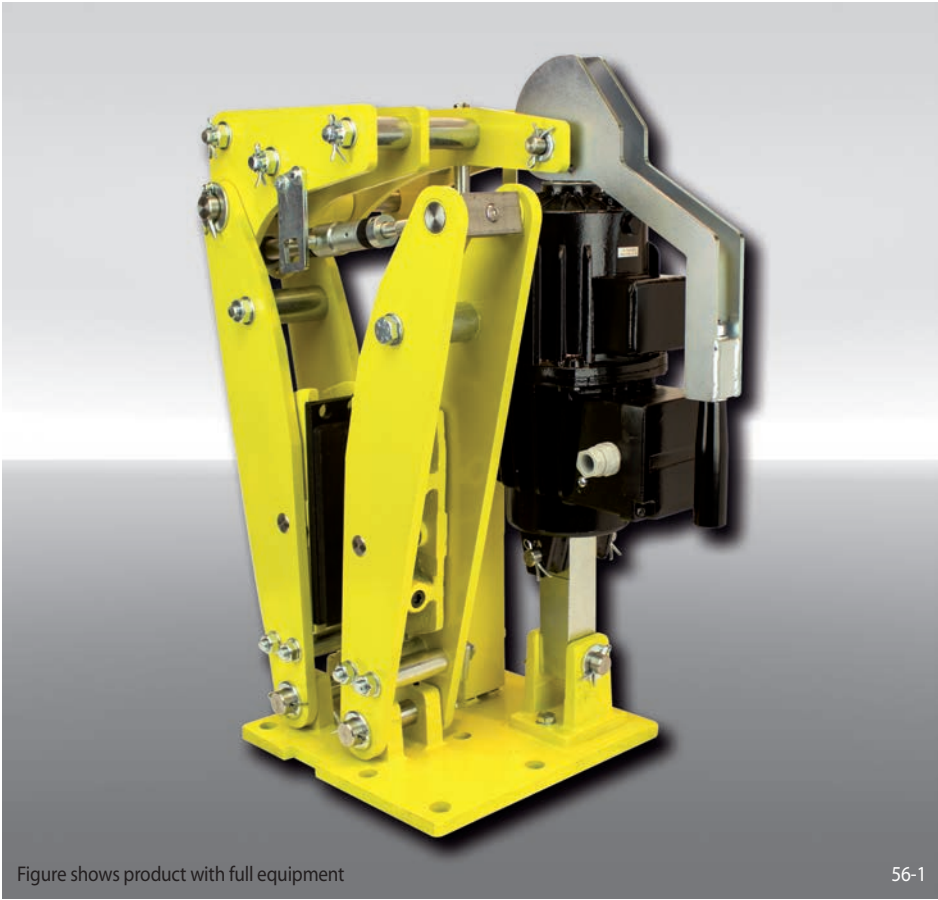


# Brake Caliper DS 160 FEA

spring activated – electrohydraulically released



Features	Code
Brake Caliper	D
Disc Brake	S
Frame size 160	160
Spring activated	F
Electrohydraulically released	E
Automatic adjustment to accommodate friction block wear	A
Thrustors 451 or 452 are available	451 452
Thrustors mounted right or left available	R L
Thickness of brake disc 20 mm	20

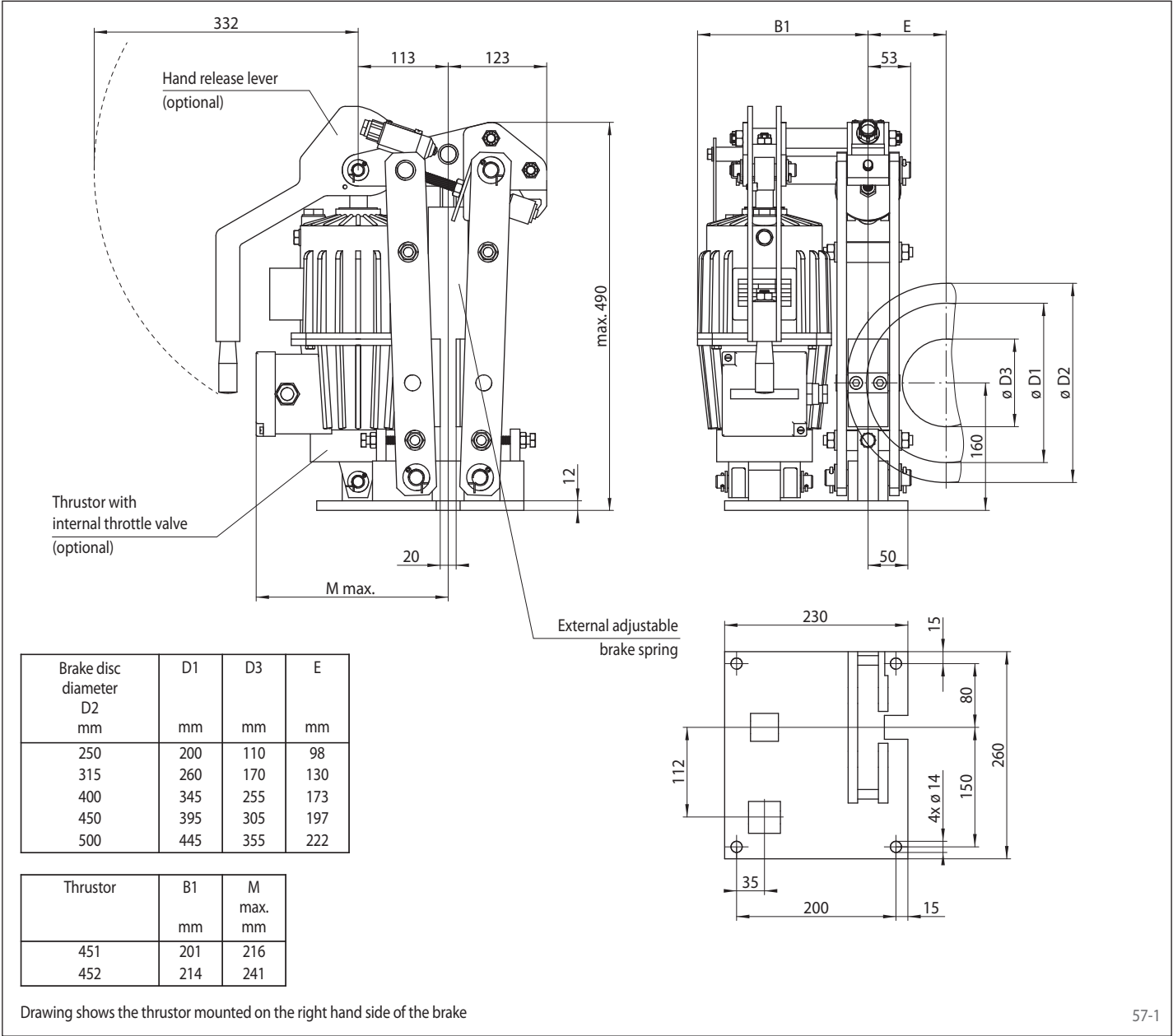
**Example for ordering**  
 Brake Caliper DS 160 FEA, thrustor 452, thrustor mounted right, thickness of brake disc 20 mm:

DS 160 FEA - 452 R - 20

Technical Data

	Brake Caliper DS 160 FEA	
	with thrustor 451	with thrustor 452
Brake disc diameter	Braking torque	Braking torque
mm	Nm	Nm
250	200	265
315	255	343
400	334	451
450	383	520
500	432	590
Clamping force	2500 N	3400 N
Braking torque adjustable	20 - 100%	20 - 100%
Power input	130 W	180 W
Oil volume	1,3 L	2,5 L
Voltage	230/400 V	230/400 V
Weight	39 kg	44 kg

The braking torques shown in the table are based on a theoretical friction coefficient of 0,4.



- Options**
- Micro-switch wear control
  - Micro-switch status control
  - Hand release lever
  - Thrustor with internal throttle valve
  - Thrustor in heat resistant design
  - Corrosion protected design
  - Friction lining of sintered metall