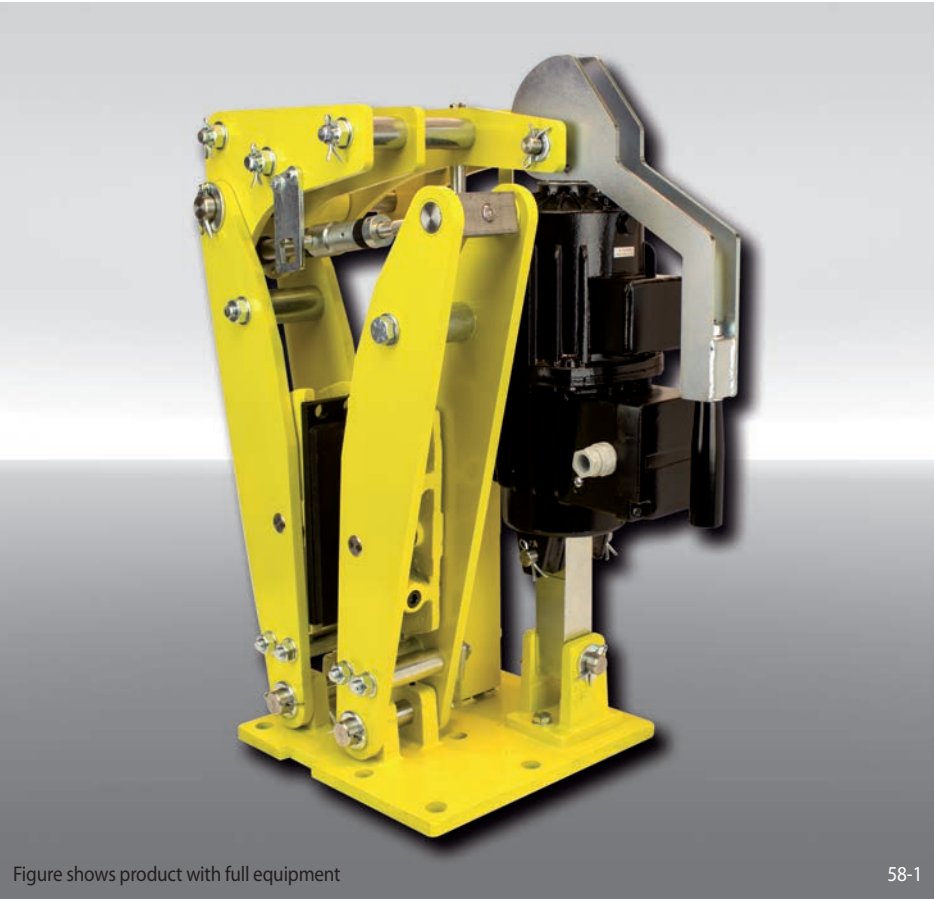


Brake Caliper DS 230 FEM

spring activated – electrohydraulically released



Features	Code
Brake Caliper	D
Disc Brake	S
Frame size 230	230
Spring activated	F
Electrohydraulically released	E
Manual adjustment to accommodate friction block wear	M
Thrustors 451, 452 or 457 are available	451 452 453
Thrustors mounted right or left available	R L
Thickness of brake disc 30 mm	30

Example for ordering
 Brake Caliper DS 230 FEM, thrustor 453, thrustor mounted right, thickness of brake disc 30 mm:

DS 230 FEM - 453 R - 30

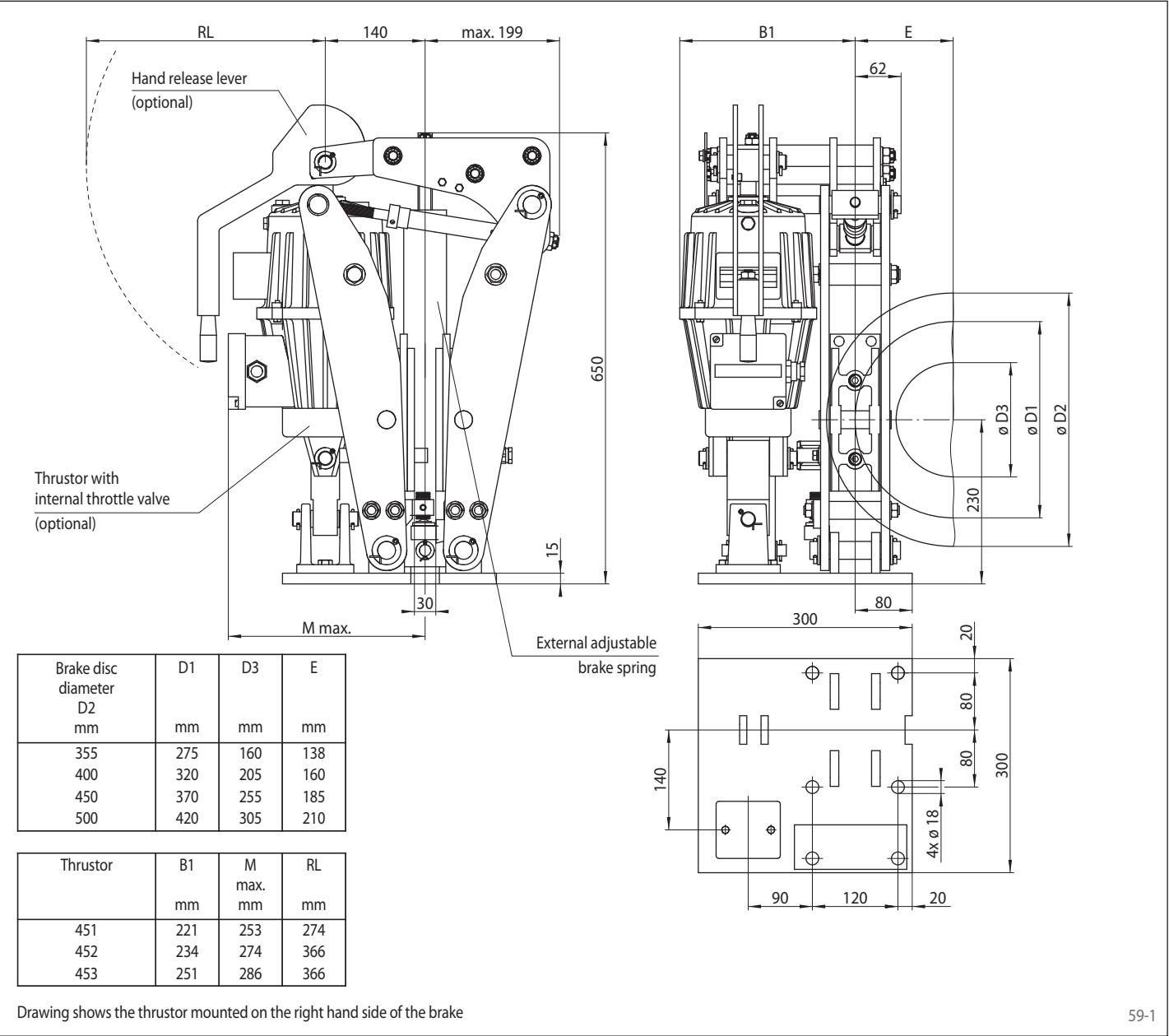
Technical Data

	Brake Caliper DS 230 FEM		
	with thrustor 451	with thrustor 452	with thrustor 453
Brake disc diameter	Braking torque	Braking torque	Braking torque
mm	Nm	Nm	Nm
355	300	450	900
400	350	500	1 000
450	400	550	1 100
500	450	600	1 250
Clamping force	2 700 N	3 600 N	7 400 N
Braking torque adjustable	20 - 100%	20 - 100%	20 - 100%
Power input	130 W	180 W	250 W
Oil volume	1,3 L	2,5 L	3,5 L
Voltage	230/400 V	230/400 V	230/400 V
Weight	69 kg	74 kg	76 kg

The braking torques shown in the table are based on a theoretical friction coefficient of 0,4.

Brake Caliper DS 230 FEM

spring activated – electrohydraulically released



59-1

- Options**
- Micro-switch wear control
 - Micro-switch status control
 - Hand release lever
 - Thrustor with internal throttle valve
 - Thrustor in heat resistant design
 - Corrosion protected design
 - Friction lining of sintered metall