

Brake Caliper DS 370 FEM

spring activated – electrohydraulically released

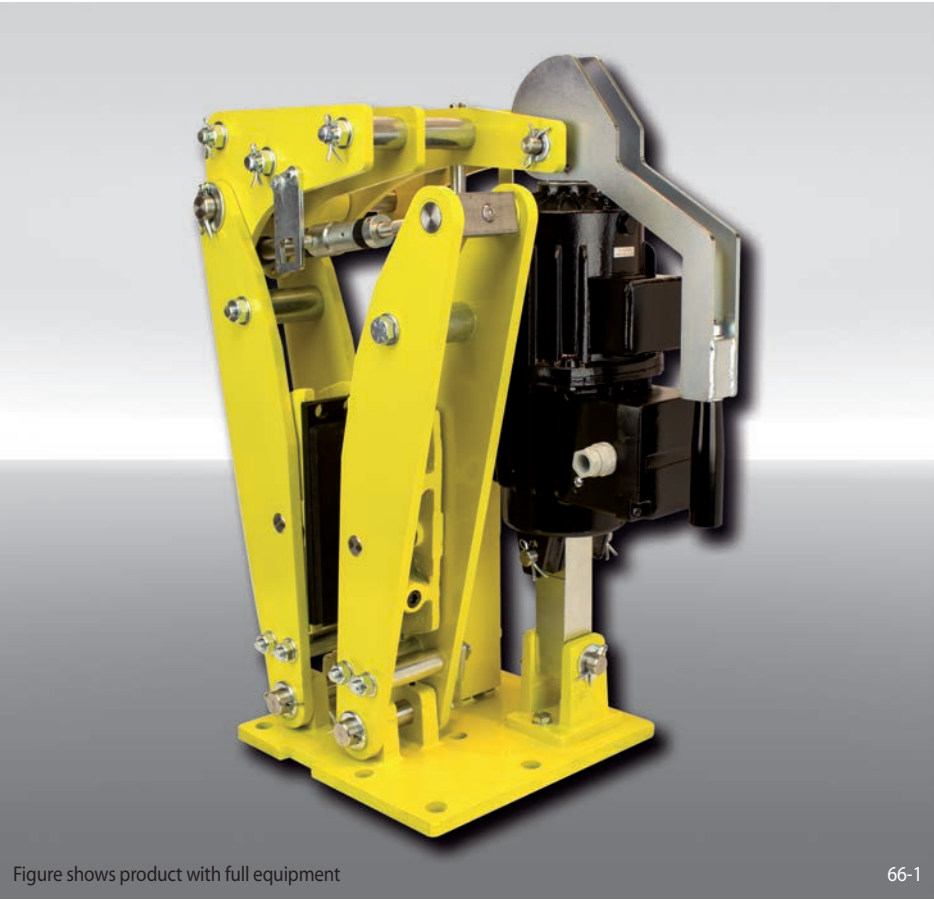


Figure shows product with full equipment

66-1

Features	Code
Brake Caliper	D
Disc Brake	S
Frame size 370	370
Spring activated	F
Electrohydraulically released	E
Manual adjustment to accommodate friction block wear	M
Thrustors 456 or 457 are available	456 457
Thrustors mounted right or left available	R L
Thickness of brake disc 30 mm	30

Example for ordering

Brake Caliper DS 370 FEM, thrustor 456, thrustor mounted right, thickness of brake disc 30 mm:

DS 370 FEM - 456 R - 30

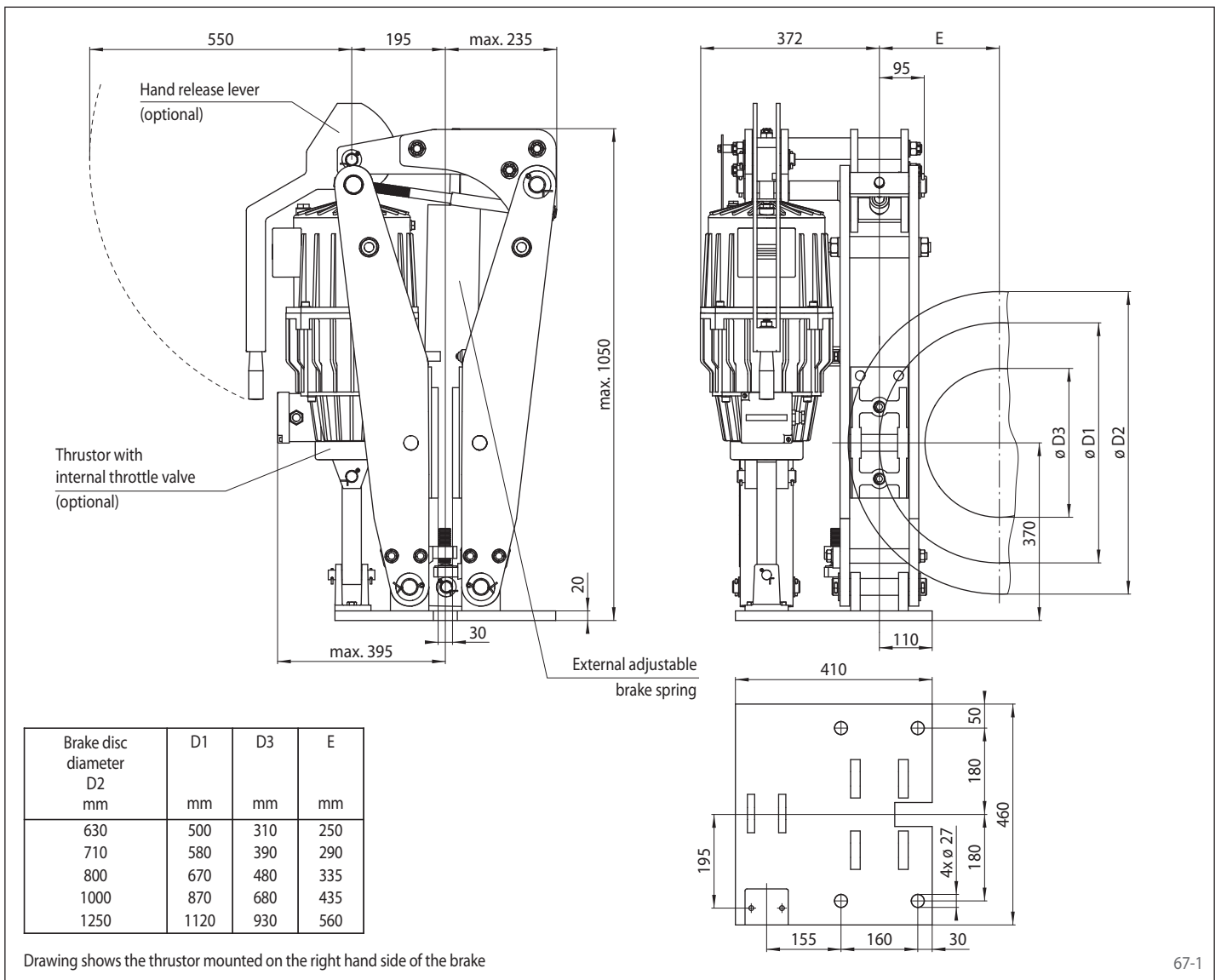
Technical Data

	Brake Caliper DS 370 FEM	
	with thrustor 456	with thrustor 457
Brake disc diameter	Braking torque	Braking torque
mm	Nm	Nm
630	6700	10000
710	7550	11300
800	8500	12750
1000	10600	15900
1250	13300	19900
Clamping force	31700 N	47600 N
Braking torque adjustable	20 - 100%	20 - 100%
Power input	750 W	850 W
Oil volume	11 L	11 L
Voltage	230/400 V	230/400 V
Weight	264 kg	264 kg

The braking torques shown in the table are based on a theoretical friction coefficient of 0,4.

Brake Caliper DS 370 FEM

spring activated – electrohydraulically released



67-1

Options

- Micro-switch wear control
- Micro-switch status control
- Hand release lever
- Thrustor with internal throttle valve
- Thrustor in heat resistant design
- Corrosion protected design
- Friction lining of sintered metall